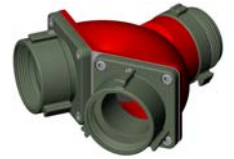


The wyes are made primarily of aluminum alloy in a heat-treated, fire engine red finish. This light weight and smaller design minimizes friction loss by up to three times.

**Note: Double, Triple or Quadruple clappered outlets available.**



(2) 2.5" FEMALE INLETS  
2.5" MALE OUTLET  
8.2" X 4.0" X 8.0" - 5.5 lb



(2) 2.5" FEMALE INLETS  
4.0" MALE OUTLET  
8.4" X 4.5" X 8.0" - 7.2 lb



(2) 4.0" STORZ SWIVEL INLETS  
6.0" STORZ OUTLET  
21.3 lb



(2) 4.0" STORZ INLETS  
4.0" STORZ OUTLET  
16.0" X 9.0" X 16.0" -18.8 lb



(3) 2.5" FEMALE INLETS  
4.0" , 5.0" OR 6.0" OUTLET  
14.4" X 7.4" X 13.5" -14.4 lb



(4) 2.5" FEMALE INLETS  
4.0" , 5.0" OR 6.0" OUTLET  
18.1" X 7.4" X 14.2" -17.6 lb

### Siamese with Threaded Coupling

Description	Code
2 x Female swivel inlets 2.5" Male outlet 2.5"	<b>8150</b>
2 x Female swivel inlets 2.5" Male outlet 4.0"	<b>8151</b>
2 x Storz Swivel inlets 4.0" Storz outlet 6.0"	<b>23371</b>

Other configurations available. Please contact us.

### Siamese with Storz Coupling

Description	Code
2 x Female swivel inlets 2.5" NST Male Outlet 4.0" Storz	<b>2233</b>
2 x Inlets 4.0" Storz Outlet 4.0" Storz	<b>11103</b>

Other configurations available. Please contact us.

### Siamese with Multi Inlets

Description	Code
3 x Female swivel inlets 2.5" Outlet 4.0", 5.0" or 6.0" threaded or storz	<b>19659</b>
4 x Inlets 2.5" Outlet 4.0", 5.0" or 6.0" threaded or storz	<b>19675</b>

Other configurations available. Please contact us.